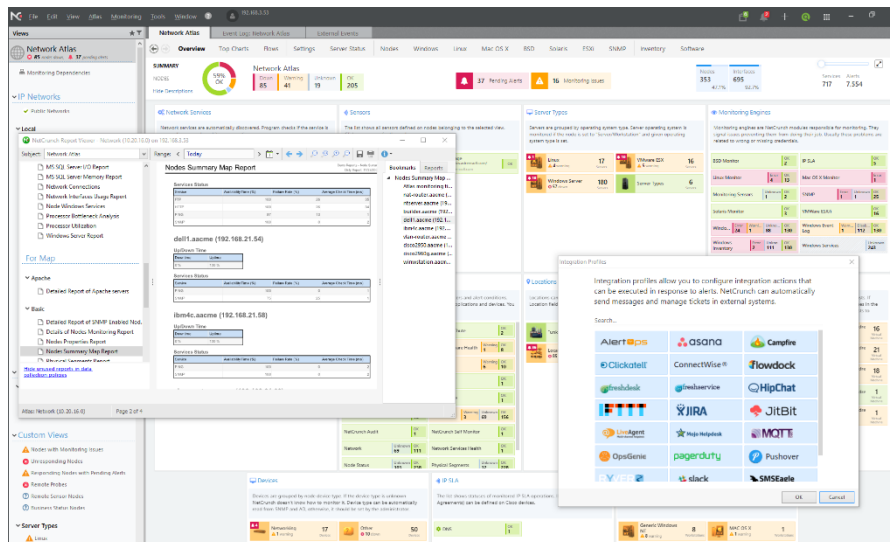


NetCrunch 10 is here!

Monitor networks, systems and applications



More than 1,400 changes and functions have been added! In particular:

- Full IPv6 support in seamless interface along IPv4
- Improved SNMPv3 support, including more than 8500 MIBs
- SSL Certificate sensor, which allows checking of the SSL certificate expiration date, and various certificate properties
- Remote Sensor Probes can check more than 70 network services on networks behind NAT and send data back to NetCrunch
- Text log sensor now supports monitoring Windows and Linux/BSD logs
- Business Status Nodes allows for monitoring redundant nodes, services or sensors as a single entity
- Updated VLAN support and automatic Layer-2 Maps now support Etherchannel

Over AdRem Software

AdRem Software is an independent software company based in Cracow, Poland, with regional office in New York, USA. It's flagship product – NetCrunch – is an agentless network and systems monitoring and management solution that automatically maps, monitors and troubleshoots networks up to 10,000 nodes. NetCrunch monitors all leading Operating Systems and runs on Windows. AdRem's products are sold globally through resellers, distributors and system integrators, and live support is provided in English and Polish language, even for trial installations.

Full Press Release:

AdRem Software Unveils NetCrunch 10 – the Latest Edition of its Flagship Network, System and Application Monitoring Suite

Cracow, Poland – February XX, 2018 – AdRem Software announced the shipping of NetCrunch 10 Suite, the latest edition of its comprehensive IT monitoring system, encompassing network, system and application monitoring in a single package.

Version 10 builds on more than 18 years of research and development within system and network monitoring field at AdRem Software. By adding more than 1,400 fixes, features and improvements since version 9, NetCrunch aims to offer a more integrated, enterprise-class and adaptable IT monitoring experience for the business user.

Today's release of NetCrunch 10 reflects the tremendous changes in the responsibilities of the modern IT administrator. An average SMB relies on a multitude of virtual machines, databases, mobile devices and services – many of which are running on remote hardware. With GDPR becoming in-effect in 2018, the Administrator's role is more focused on ensuring that all in-house and remote systems are safe, up-to-date, connected, backed-up and seamlessly running.

With this in mind, NetCrunch 10 offers a holistic IT monitoring suite that stretches far beyond the scope of traditional network monitoring software. Due to its automatic network topology, service, device type and OS discovery, NetCrunch offers a deep insight into the network immediately upon installation. Out of the box and without any agents, NetCrunch can monitor Operating Systems, services, hypervisors, virtual machines, Flow, websites, SSL Certificates, logs, SNMP devices and much more. Administrators can be notified of any event in a matter of seconds, and know exactly the scope of the issue. This cuts down on response time, as well as enables the Administrators to manage their network pro-actively.



“We aim to deliver a system that simply works,” said Tomasz Kunicki, AdRem Software founder and CEO. “We take the guess-work out of IT monitoring. NetCrunch 10 delivers more than 170 monitoring packs, which are sets of best-practice monitoring settings. Also, we can proudly say that we have the biggest MIB database in the world, encompassing more than 8,500 MIBs pre-compiled and ready to to be used. You can be up and running and have your network monitored by NetCrunch within minutes. And that was our goal.”

UBM GmbH Austria
Dorfstraße 92
A-6364 Brixen im Thale
austria@ubm-global.com
Tel: +43 (0) 5334 30100
Fax: +43 (0) 5334 30200

UBM GmbH Germany
Siemensstrasse 24
D-85716 Unterschleissheim
germany@ubm-global.com
Tel: +49 (0) 89 3215 2810
Fax: +49 (0) 89 3215 2811

UBM GmbH Switzerland
Friedeggstrasse 13
CH-3400 Burgdorf
switzerland@ubm-global.com
Tel: +41 (0) 34 427 1065
Fax: +41 (0) 34 427 1066