

NetCrunch monitors everything in your network, provides stunning dashboards, and features advanced alert management.

Effortlessly manage thousands of devices, metrics and multiple locations on a single server.

MONITORING & OBSERVABILITY

NetCrunch is adaptable and scalable, offering powerful monitoring for any network. With auto-discovery, distributed monitoring, and integrated inventory, it keeps your network fully covered and up-to-date.

NETWORK INFRASTRUCTURE

Network Device Monitoring, Server Monitoring, Datacenter Hardware Monitoring (IPMI), and Uptime Monitoring (checks) for comprehensive oversight of physical and virtual network infrastructures.

SERVICES & APPLICATIONS

Includes Cloud Monitoring, Web & SSL Certificate Monitoring, Telemetry, Database Monitoring, Windows Application Monitoring, and Virtualization Monitoring to ensure optimal performance and reliability of applications and cloud services.

PERIPHERAL & IoT DEVICES

Includes monitoring of devices such as Printers, IP Cameras, and any device that can be monitored with SNMP or API, ensuring the integrity and functionality of essential peripheral and IoT devices.

ADVANCED & CUSTOM MONITORING

Includes Custom & Specialized Monitoring, File & Folder Monitoring, Telemetry, Custom Data Parsers and Remote Scripting, offering flexible and tailored solutions for diverse and complex monitoring needs.

SECURITY & COMPLIANCE

Includes Security Monitoring for intrusion detection and proactive threat management, SSL Certificate tracking, Config and Log Monitoring for ensuring compliance with regulatory standards and operational integrity.

DISCOVER MONITORING TARGETS

A 'target' in NetCrunch describes any element you want to monitor, whether an application, resource, protocol, or service. With over 675 predefined targets, NetCrunch allows for extensive and tailored monitoring capabilities.

ALERTING
RULES

2,000

MONITORING
TARGETS

675+

SUPPORTED
VENDORS

450+

ALERTING
INTEGRATIONS

25+

CONFIG
PROFILES

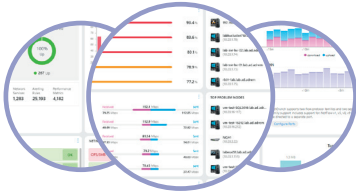
155+

VISUALIZATION

NetCrunch offers powerful visualization with live dashboards, automatic network topology maps, and customizable views. All updates are instant, so you're always in sync with your network.

BUILT-IN DASHBOARDS

Predefined dashboards feature status overviews, top charts, and flow data for any node group.



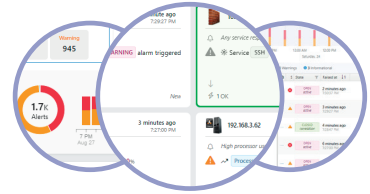
DEVICE GROUP VIEWS

NetCrunch offers over 20 specialized device views, including health, system, and traffic.



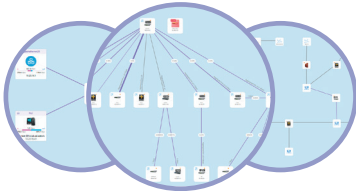
ALERT VIEWS

The Active Alerts view displays real-time alerts, with options to analyze and review event history.



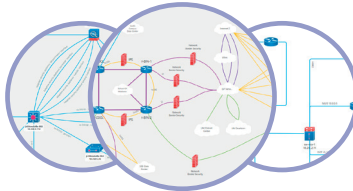
NETWORK TOPOLOGY MAPS

NetCrunch automatically generates physical and logical (routing) maps.



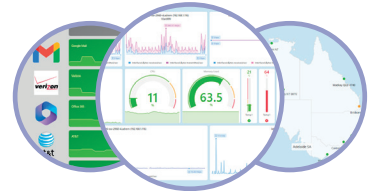
CUSTOM LIVE DIAGRAMS

Create live network or service diagrams, linking elements to display real-time data.



CUSTOM LIVE DASHBOARDS

Free-form live dashboards let you mix diagrams, charts, and maps for a tailored view.



DEVICE STATUS DETAILS

Node Status highlights key aspects like overview, performance, processes, and traffic.



ALERT DETAILS

Alert Details provide executed actions, trigger reasons, and alert frequency.



DRILL DOWN VIEWS

Access detailed insights with views like trend analysis, config changes, and installed software.



EASILY SHAREABLE

NetCrunch makes sharing easy with one-click access to dashboards, diagrams, and maps for non-NetCrunch users. Access rights are managed automatically, with optional password protection. Even if NetCrunch runs

on-premise, recipients can view data from anywhere via NetCrunch Connection Cloud. You can also embed graphical data views into any website using iframes, just like embedding YouTube videos.

ALERTING & EVENT MANAGEMENT

NetCrunch's alert system transforms event handling. Each alert triggers a dynamic response, not just a notification, executing tailored actions based on predefined criteria.

ADVANCED & CUSTOM MONITORING

Leveraging cutting-edge technology, NetCrunch automates responses to common network events.

REMOTE COMMAND EXECUTION

In more complex scenarios, NetCrunch executes remote commands based on specific alert criteria.

EVENT REACTION IN REAL-TIME

NetCrunch intelligently assesses each event, determining the best course of action.

ALERT ACTION ESCALATION

In critical scenarios, our system escalates alert actions to ensure urgent issues receive the attention they need.

EVENT CORRELATION

Our system excels in identifying and correlating related events across your network.

CONDITIONAL ALERTS

NetCrunch's conditional alerts enable customized responses based on specific event characteristics.

INTEGRATIONS

NetCrunch integrates seamlessly with over 25 platforms, including IFTTT, Jira, PagerDuty, Amazon SNS, and Zendesk, enhancing event correlation and conditional alerts for a more cohesive and responsive management environment.

NetCrunch redefines your network management from reactive to proactive. With automated responses, remote command execution, and tailored alerts, it ensures your network operates at peak performance and reliability.

WHY CHOOSE NETCRUNCH?

NetCrunch outperforms the competition with 4x the capabilities and 2x the speed, all with a lower TCO. It's a powerful, scalable solution trusted by thousands over 20 years.



UNMATCHED PERFORMANCE

Delivers 4x more and 2x faster without the need for an external database, reducing costs.

AGENT-FREE MONITORING

Monitor without agents, with easy probes for remote location. No agent hassle.

SCALABILITY WITHOUT HASSLE

Monitors 100,000 interfaces on a single server, where others struggle.

COMPREHENSIVE MONITORING

Covers network infrastructure, systems, IoT, cloud, and more, all in one tool.

BUILT-IN SHARING & CUSTOMIZATION

Create, share and embed live dashboards and diagrams with ease.

ON-PREMISE SECURITY, CLOUD FLEXIBILITY

Enjoy secure on-premise data with optional cloud access at no extra cost.

PROVEN RELIABILITY

A proven solution trusted by users worldwide for over two decades.

FAST EVOLVING

Hundreds of new features added each year, constantly improving.

EXPERIENCE THE DIFFERENCE

Join the thousands who trust NetCrunch for unbeatable network intelligence. From small businesses to large enterprises, NetCrunch scales effortlessly to meet your needs.



Microsoft Partner





WELCOME TO ASSISTED EVALUATION

Do not spend time on setup and configuration!
Let us guide you through the features that matter
most to you.

NetCrunch has vast monitoring and presentation
capabilities, but they shine best when properly
configured.



Visit adremsoft.com to learn more,
schedule a demo, and start your free trial.



adrem[®]
software

AdRem Software, Inc.
1330 Avenue of the Americas, Suite 23A,
New York NY 10019, United States
Phone: +1 212 319 4114

AdRem Software sp. z o.o.
ul. Marcika 12,
30-443 Kraków, Poland
Phone: +48 12 37 88 900